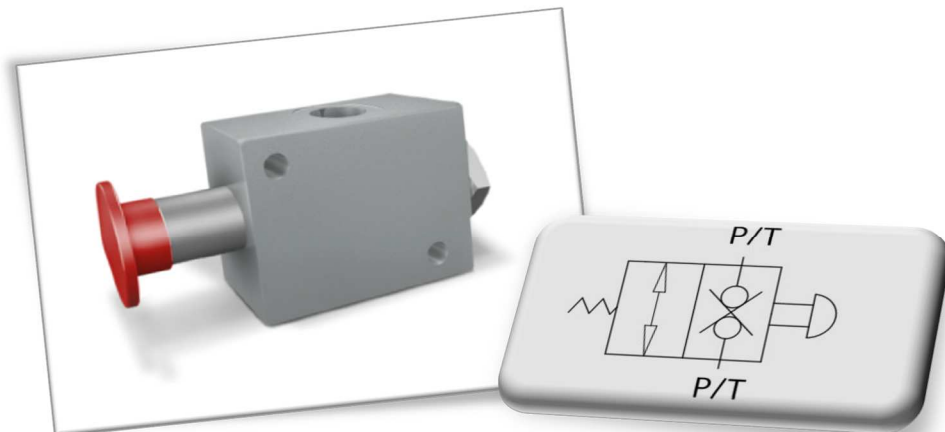
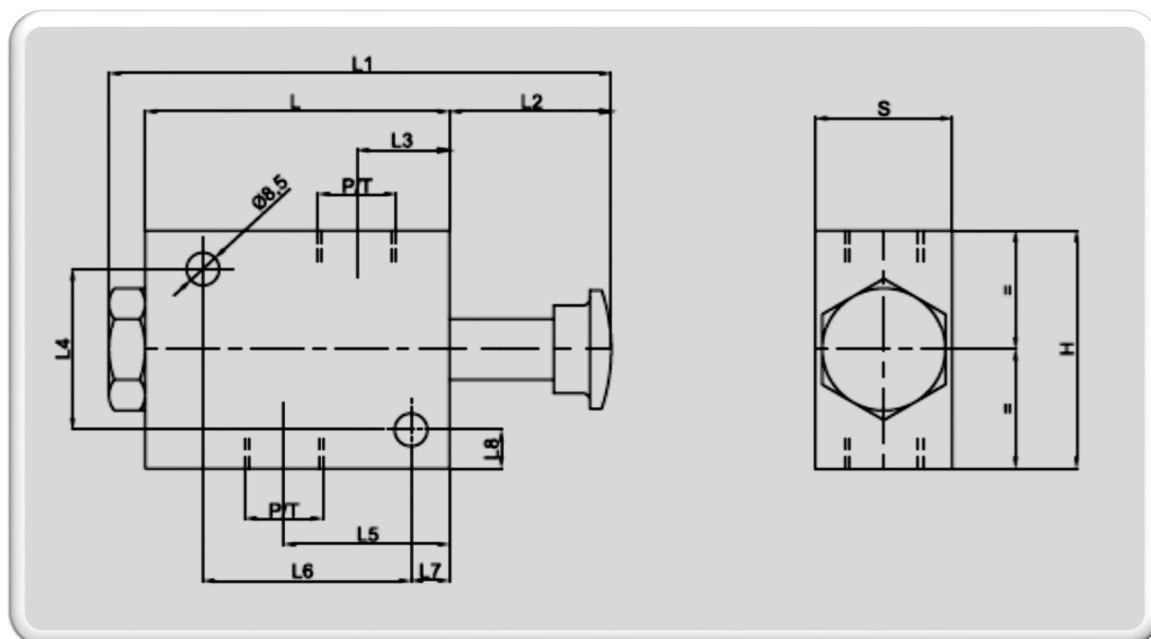




Valve d'arrêt d'urgence manuelle :



Référence	Type	Débit Max L/mn	Pression max Bar
V01320	VEM 1/2	70	350



Réf.	P/T GAS	L mm	L1 mm	L2 mm	L3 mm	L4 mm	L5 mm	L6 mm	L7 mm	L8 mm	H mm	S mm
V01320	G 1/2"	79	130	42	24	42	43	54	10	10	62	35